

## Attaching a SQL Server Database on SQL Server 2005 Express Using SQL Server Management Studio

Download SQL Server Management Studio at:

<http://msdn.microsoft.com/vstudio/express/sql/download/>

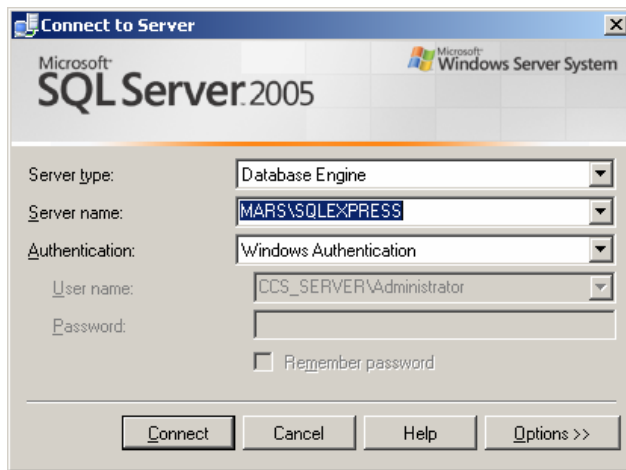
Download a Loan Performer SQL Server (Express) database from:

<http://www.loanperformer.com>

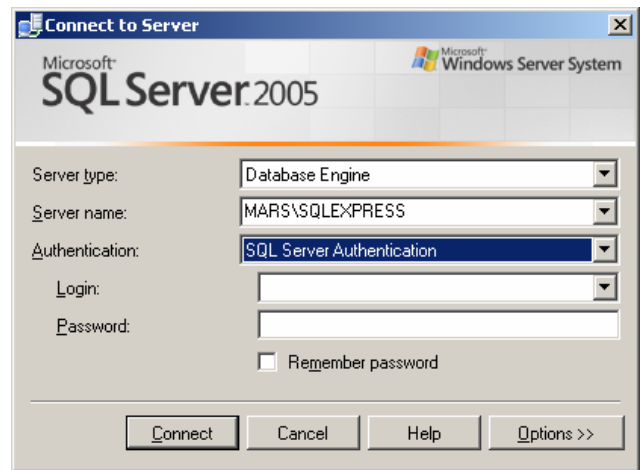
### Starting Management Studio

When you start Management Studio initially, the following connection screen is displayed. This allows you to connect to an installed instance of SQL Server Express on your machine and/or the network.

You may log into a specified server using either Windows or SQL Server Authentication as shown below. The database administrator should be aware of what connection mode has been set up for use. The default is Windows Authentication.

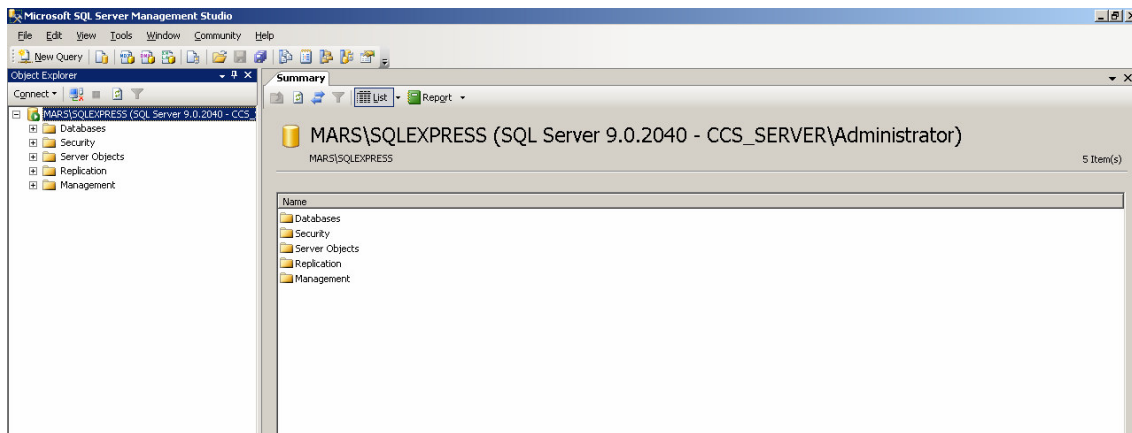


Logging on using Windows Authentication

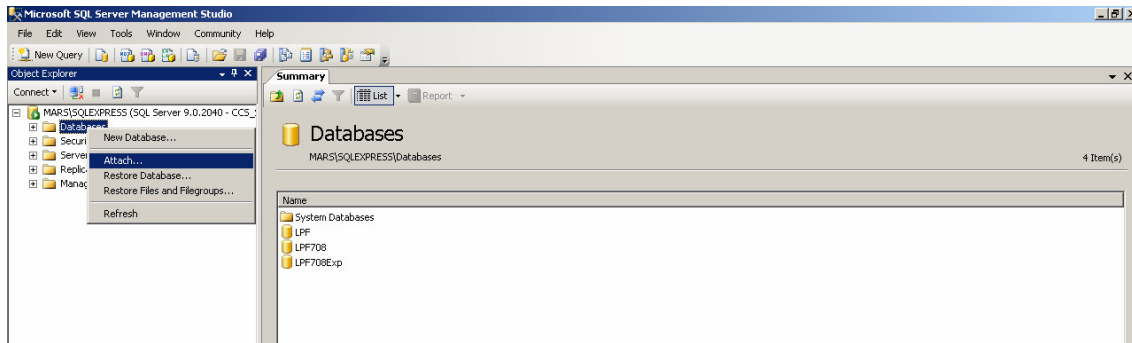


Logging on using SQL Server Authentication

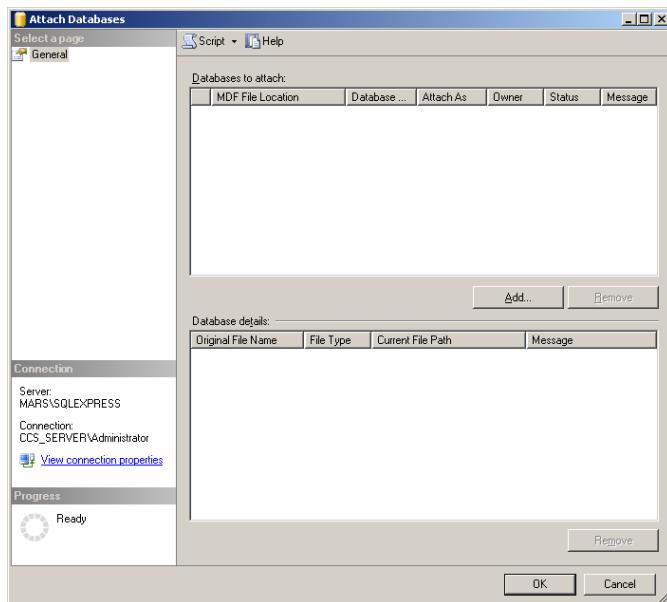
Click Connect to connect to the server. When connection is successful, a screen like below is displayed:



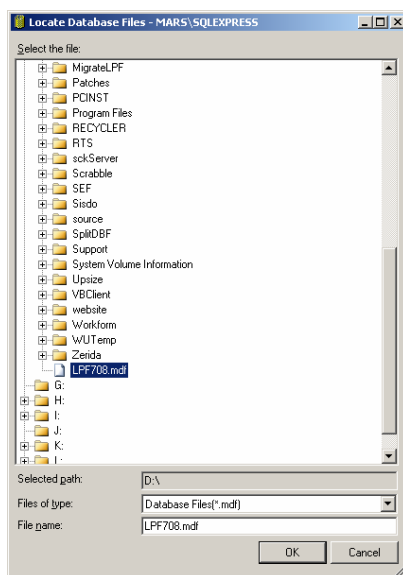
To attach a database, right-click Databases and select attach as shown:



The Attach Databases screen is displayed.

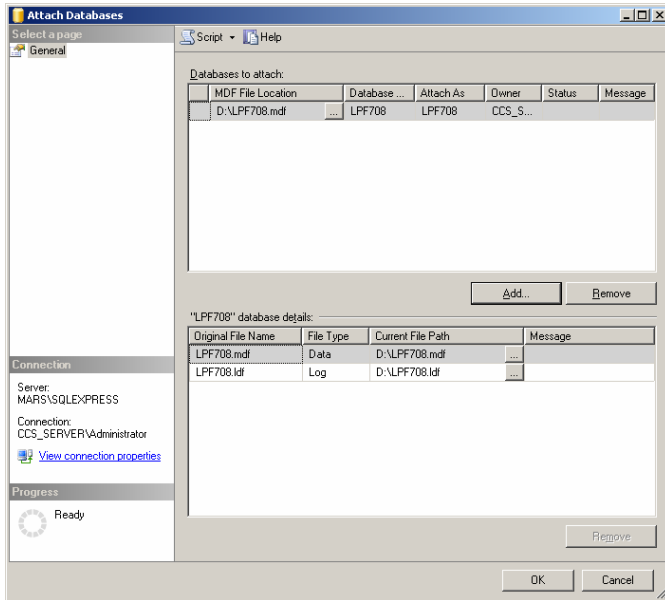


Click on the Add button to open the Locate Database File dialogue box.



Using this screen, select the SQL Server database that you downloaded and saved on your computer. You will need to be aware of where you saved the database files and the name of the .MDF file.

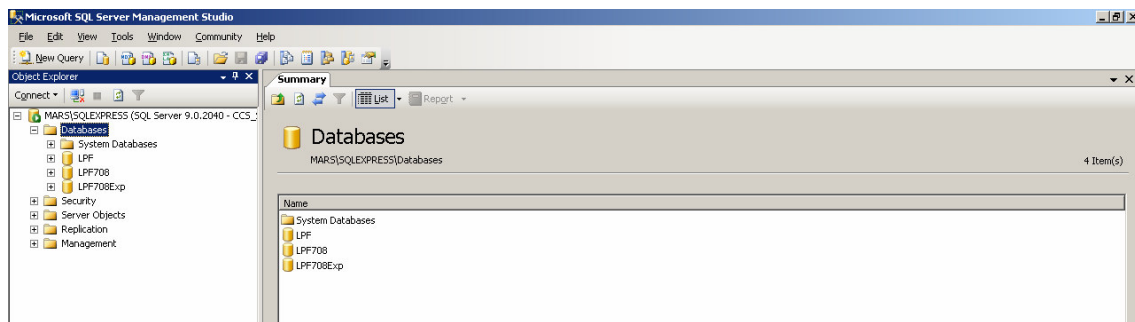
Select the file and Click Ok.



You will be returned to the Attach Databases screen where the details of the selected database will be displayed. You may, if required, attach more than one database using this screen by clicking Add button again.

Click Ok to attach the database.

Once attached, the database will appear on the Management Studio screen under the Databases folder as shown.



When you now log into Loan Performer (LPF), click on the SQL Server button for LPF to search for databases existing on your network. The attached database should now appear.

